



WE ARE EXCELLENT.  
WE ARE QE.



We are delighted that the Independent Schools Inspectorate has found Queen Ethelburga's Collegiate to be 'Excellent' across all schools, praising our pupils' outstanding academic achievements and personal development. Our Early Years Foundation Stage provision in Chapter House was also assessed as 'Outstanding' in all areas.

These are the Inspectorate's highest possible ratings and are a ringing endorsement of the quality of teaching delivered, extra-curricular opportunities offered, and pastoral care provided to students here at QE.

Particularly pleasing to see are the judgments that our students make excellent progress across all areas of the Collegiate, including developing higher order thinking skills; the strong personal development that is characterised by our self-confident, resilient and well-behaved pupils; and the excellent preparation this gives them for their future lives.

*"The school is highly successful in fulfilling its aim to promote the highest academic standards and to enable pupils to accomplish its mission statement, which is: 'to be the best that I can with the gifts that I have.'"*

Educational Quality Inspection, ISI, February 2019



Amy Martin

Chair of the Collegiate Board



Steven Jandrell

Principal



# THE COLLEGE

(INCLUDES FINDINGS ON CHAPTER HOUSE AND KING'S MAGNA)

- *The quality of pupils' academic and other achievements is excellent.*
- *The quality of pupils' personal development is excellent.*
- *Pupils make excellent progress across all areas of learning throughout their time at the school.*
- *Pupils achieve much success in a wide range of sporting, cultural, academic and outdoor activities.*
- *Pupils are highly articulate and have excellent communication skills.*
- *Pupils from a very wide range of different cultures get on extremely well with each other... recognising that each pupil is unique and valuing their differences.*
- *Pupils are supportive of each other.*

- *Many pupils make an excellent contribution to the school community, through undertaking roles of responsibility."*
- *Pupils display great self-confidence, self-awareness and resilience.*
- *Pupils are keen to do well and are not afraid to have a go at new challenges or to make mistakes.*



## For The College

- **At GCSE in years 2015 to 2017, performance has been well above the national average for maintained schools.**
- **A-level results in the years 2015 to 2017 have been well above the national average for sixth formers in maintained schools.**

**Regulatory Compliance Inspection, ISI, February 2019**

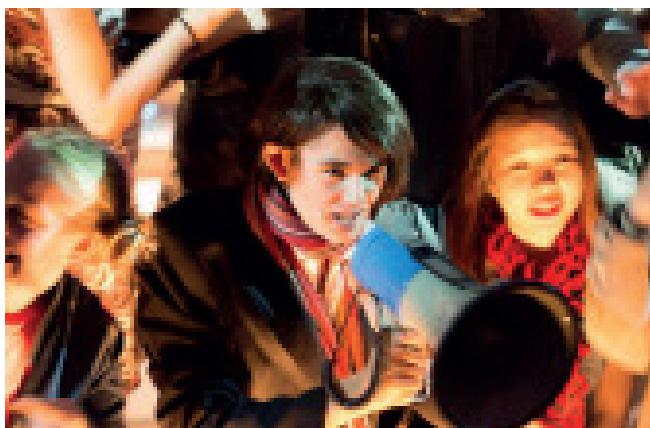


# THE FACULTY

The quality of pupils' academic and other achievements is excellent. The quality of pupil's personal development is excellent.

- *Pupils of all ages seek to achieve to the best of their ability and make excellent academic progress.*
- *Pupils have positive attitudes to learning and are hardworking and resilient.*
- *Pupils have deep respect for their own and other cultures; they demonstrate a caring, tolerant attitude and sensitivity towards the needs of others.*
- *Behaviour is exemplary, they have a well developed sense of right and wrong, and take responsibility for their behaviour and actions.*
- *Pupils excel in a wide range of creative and physical pursuits. Imaginative and creative art is displayed throughout the school.*
- *Pupils are curious and are willing to learn new skills and are not afraid to take risks.*

- *Pupils display consistently high levels of self-esteem and self-confidence, fully in line with the school's aim.*
- *Pupils have common goals when working together across the curriculum.*
- *Pupils spoke of a happy, caring and supportive community.*



## For The Faculty

- **At GCSE in years 2015 to 2017, performance has been above the national average for maintained schools.**
- **A-level results in the years 2015 to 2017 have been well above the national average for sixth formers in maintained schools.**

**Regulatory Compliance Inspection, ISI, February 2019**